



TROUT RUN TRAIL

11 mile loop of groomed classic track and skating lane consisting of hills and flat land. 3/4 mile of this trail (Dug Road) is lighted for night skiing.

Dug Road to Fish Hatchery going south is hilly and more suitable for intermediate to advanced skiers while traveling north from the Fish Hatchery is flat and suitable for beginning skiers.



WILL BAKER PARK

3/4 mile of groomed classic track and skating lane, very flat and perfect for beginning to intermediate skiers.

FOR MORE INFORMATION

Decorah Parks and Recreation
400 Claiborne Drive
PO Box 513
Decorah, IA 52101

(563) 382-4158

parkrec@decorahia.org

<https://parks.decorahia.org>

SNOWSHOEING& WINTER WALKING

In addition to the trails highlighted in blue in this brochure, the areas listed below are wonderful for snowshoeing and winter walking.

LOWER ICE CAVE

1 mile flat ungroomed trail winding along the Upper Iowa River. Access from Ice Cave Road.

TWIN SPRINGS PARK

3/4 mile ungroomed trail overlooking Twin Springs trout stream . Access is gained through Twin Springs Park off of US Hwy 52.

OFF ROAD BIKING

DHPT (Decorah Human Powered Trails) grooms trails for winter biking in Van Peenen Park. Best access is on Quarry Hill Road across from the old Bruening Shop or at the main park entrance across from the quarry.

Decorah Trails & Winter Recreation





PALISADES PARK

2 miles of groomed classic track and skating lane for intermediate to advanced skiers. Trails show a spectacular view of Decorah.



VAN PEENEN PARK

2 miles of groomed classic track for beginning to intermediate skiers. Winds through a native prairie and pine trees. Access from Quarry Hill Road.



ICE CAVE ROAD

1 mile of groomed classic track and skating lane with a plowed path for walkers.



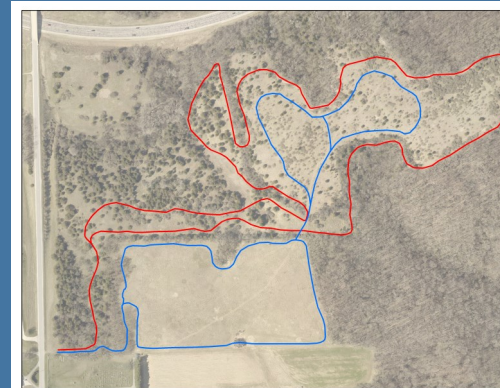
DECORAH COMMUNITY PRAIRIE

2 miles of groomed classic track, very flat and perfect for beginning to intermediate skiers. Access from Ohio Street.



LUTHER COLLEGE CAMPUS

3 miles of groomed classic track and skating lane, perfect for beginning skiers. Access across from Regents Center on Luther College Campus.



CARLSON PARK

1.8 miles of groomed classic track and skating lane for intermediate to advanced skiers (red). Multi-use trail (blue) for snowshoeing and walkers consists of a .75 mile South Loop and a .6 mile North Loop.

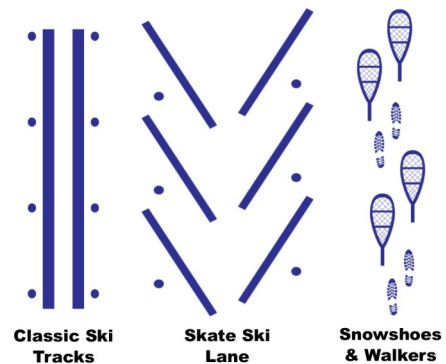
WINTER TRAIL ETIQUETTE

Decorah Parks and Recreation Staff maintain many miles of trails for winter recreation. Blue trails are multi-use trails while red trails are for skiing only. Please be mindful of others and stay in your lane. Multi-use trails include areas for classic skiing, skate skiing, snowshoeing and walking. Snowshoers and walkers should stay out of the classic ski tracks and skate ski lanes on the shared trails.



TRAIL ETIQUETTE

For the safety and enjoyment of everyone,
PLEASE STAY IN YOUR LANE



Classic Ski
Tracks

Skate Ski
Lane

Snowshoes
& Walkers

Visit <https://parks.decorahia.org/> for winter trail information